

FloraGREIF

A Virtual Flora of Mongolia

University of Greifswald (Germany)

What is FloraGREIF?

The FloraGREIF project presents the flora of Mongolia, combining taxa (species descriptions), images, distributions and records of former excursions.

Why Germany – Mongolia?

- Long term research experience in Mongolia since the 1970s at Greifswald University and other institutions in (former East) Germany
- Large herbaria collections from Mongolia in Germany
- Russian literature & language skills available

To whom is it addressed?

At first it is addressed to ecologists, specialists in plant taxonomy, students of biological sciences and amateur botanists. But it is also addressed to all people which are fascinated by the nature of Mongolia, beautiful plants and impressive photos.

<http://greif.uni-greifswald.de/floragreif>

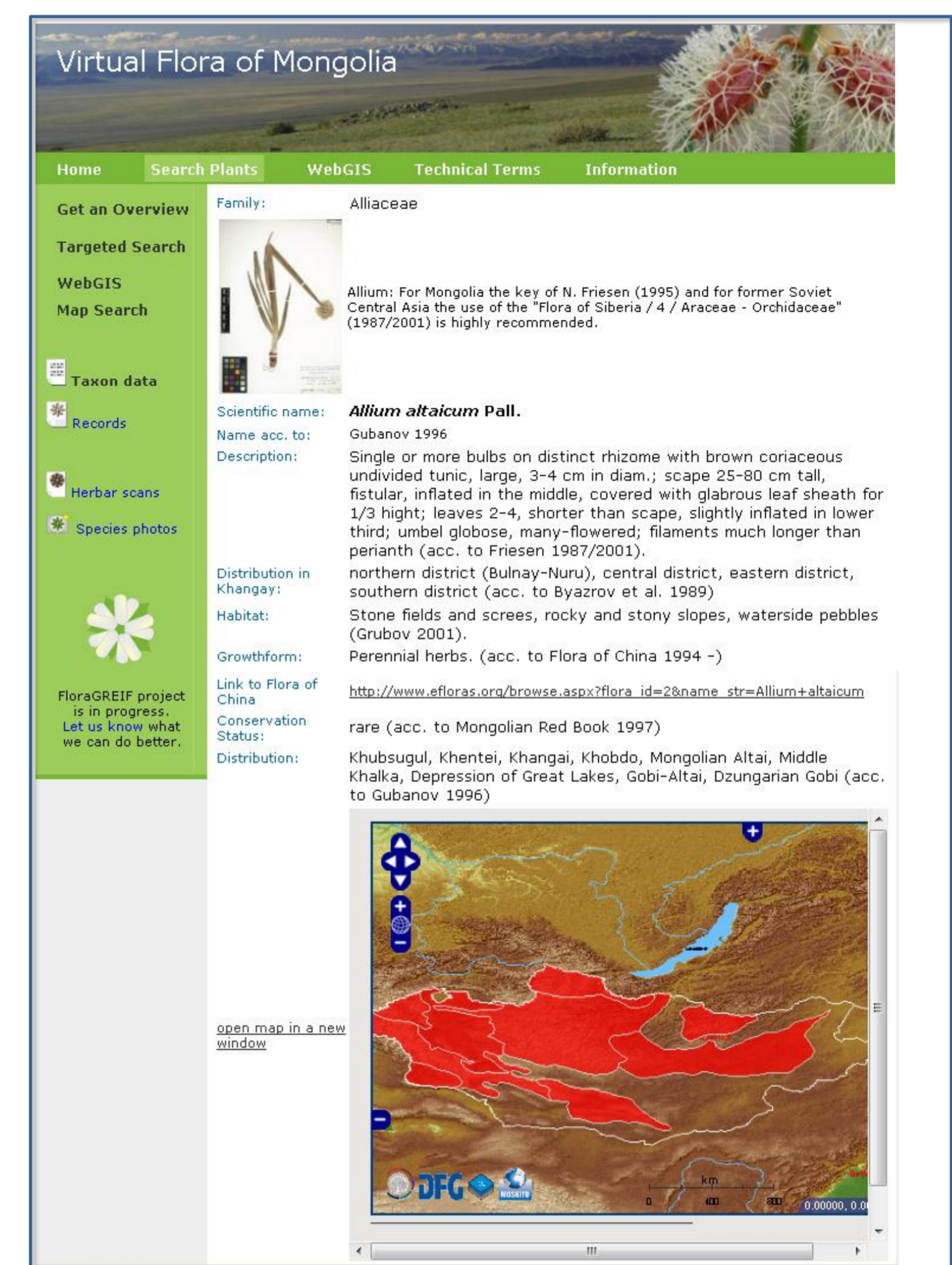
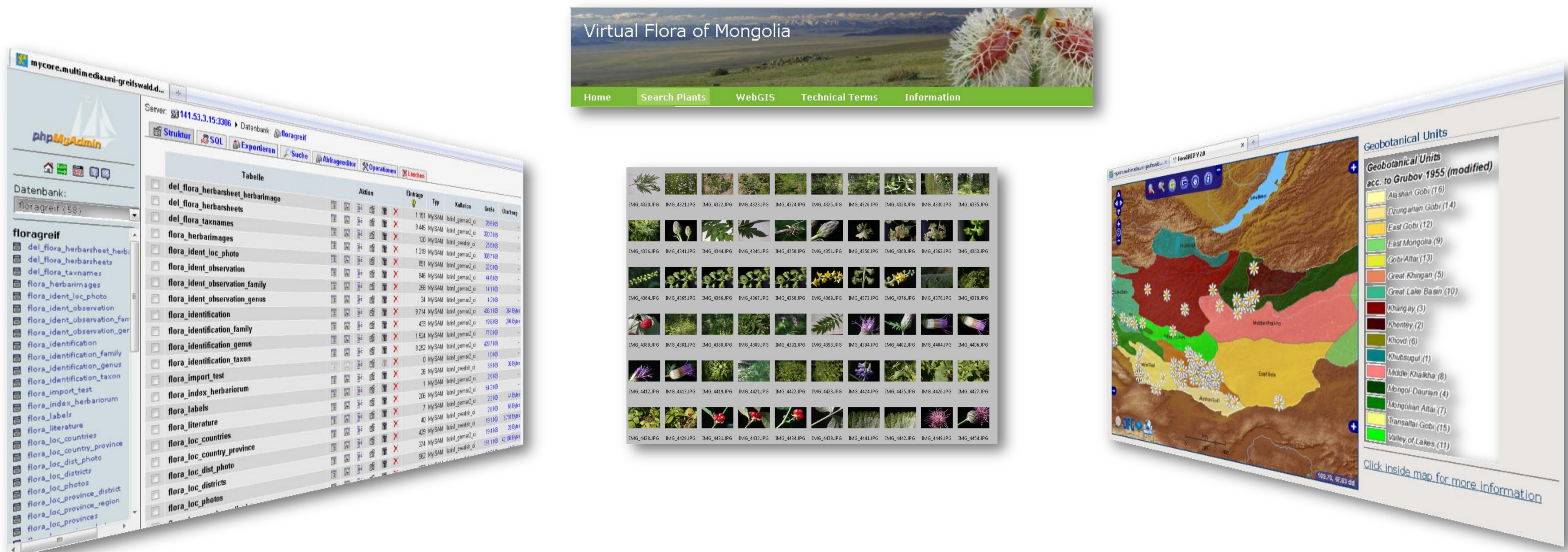


Figure shows taxon information of *Allium altaicum* Pall.

What is it made of?



Database

- 2858 Mongolian plant species
- 4647 plant records

Photo Library

- 761 scans of herbarium samples
- 923 with species photos
- 216 with macro photos
- 726 with habitat photos

WebGIS

- Elevation Maps
- Distribution Maps
- Satellite Images
- Geobotanical Units
- Vegetation Zones
- Topographic Maps
- Track Logs
- and more

What is the future of FloraGREIF?

- More partners
- More map layers
- More regions in central asia
- More point data layers (e.g. habitat photo)
- More records
- More photos
- Built in Gazetteer- Service (toponyms for geographical regions)

Partners

- Botanical Garden and Botanical Museum Berlin-Dahlem (Interface to GBIF Network – Global Biodiversity Information Facility)
- Herbaria of Berlin, Halle, Gatersleben and Jena
- University of Halle
- University of Hamburg
- Academy of Science of Mongolia
- State University of Khovd, Mongolia